

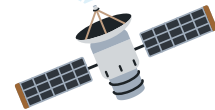
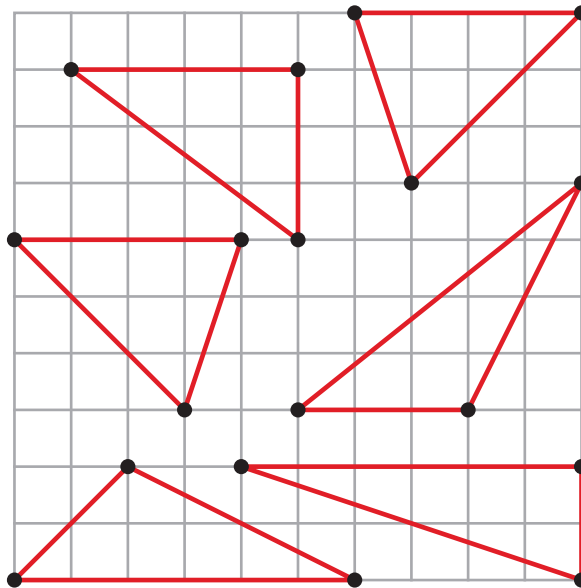
Satellites and Triangulation

Ellen the Rosella has placed satellites in the sky to create triangular regions of equal area to maximise internet coverage. Unfortunately she has lost the plans. Your task is to join groups of three dots (satellites) to create as many triangles as you can. In every puzzle it is possible to use all the dots to create triangles.

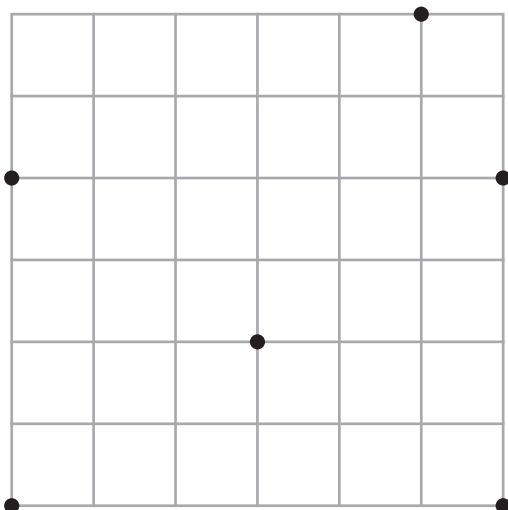
Keeping to the triangle theme, there are just three rules:

- You may not use the same dot for multiple triangles.
- Triangles must not overlap.
- Each triangle must have an area of **exactly 6 square units**.

Below is an example of a fully solved puzzle.



BEGINNER #01



BEGINNER #02

